

MAORO

Made with love. wear with joy

COLLECTION

2024
catalogue





HANNAH *dress*

Flowing dress, long model, with frills at the base and puffed sleeves.



Color: From multi-color print material, in vibrant tones of blue and lime green
Fabric composition: 100% viscose

Product code: 02306009

STEFANIA *dress*

Short dress, bell model, with frills at the base and wide bell sleeves.



Color: From multicolored print material, in vibrant tones of blue and lime green
Fabric composition: 100% viscose

Product code: 02306002



OLIVIA *dress*

Dress, side over side closure, with attached cord, made from elastic jersey and viscose.



Color: multicolor – pastel pink
Fabric composition: 95% viscose + 5% spandex

Product code: 02306001





AMALIA *dress*

Short dress, bell model, with wide frills at the base and wide bell sleeves.



Color: From multicolored print material, in vibrant tones of red and yellow
Fabric composition: 100% viscose

Product code: 02306003

VIVIEN *dress*

Short summer dress, with frills, long sleeves, puffed and elastic cleavage.



Color: Lime green

Fabric composition: 100% viscose

Product code: 02306007



VIVIEN *dress*

Short summer dress, with frills, long sleeves, puffed and elastic cleavage.



Color: Flowers green
Fabric composition: 100% viscose

Product code: 02306006





LISSA *dress*

Short summer dress, short sleeves, puffed and back closure with cord at back.



Color: Red fuchsia
Fabric composition: 100% viscose

Product code: 02306008

SOPHIA *dress*

Shirt type dress with applied bands, cordon, cuffs and collar in contrast. Button closure.



Color: Multicolored print material in vibrant tones of fuchsia
Fabric composition: 100% viscose

Product code: 02306012



TANYA *dress*

Daily dress, casual model, with pockets, belt and buckle in contrast.



Color: Camel

Fabric composition: 67% viscose + 28% nylon + 5% elastane

Product code: 02306005





TANYA *dress*

Daily dress, casual model, with pockets, belt and buckle in contrast.



Color: White

Fabric composition: 67% viscose + 28% nylon + 5% elastane, lining 100% viscose

Product code: 02306004

EVELYN *dress*

Cambered model dress with front and back V-neckline and back zipper closure.



Color: Navy black
Fabric composition: Elastic denim, 90%CO / 5%PL / 5%EA

Product code: 02306010



MAYA *dress*

Short linen dress with thin straps and applied pockets. Back zipper closure.



Color: Black
Fabric composition: 100% linen

Product code: 02306011



EVA

shirt

Long linen shirt with long sleeves, side pockets and button closure.



Color: Aquamarine green
Fabric composition: 100% linen

Product code: 02306014



EVA

shirt

Long linen shirt with long sleeves, side pockets and button closure.



Color: Black
Fabric composition: 100%
linen

Product code: 02306013



EVA

shirt

Long linen shirt with long sleeves, side pockets and button closure.



Color: Gray green
Fabric composition: 100% linen



Product code: 02306015

TIFFANY *shirt*

Airy shirt with frills and lace applications.



Color: Ivory White

Fabric composition: 100% viscose, semi-transparent viscose veil and Chantilly lace

Product code: 02306016



ARIA *shirt*

Medium-length cotton shirt, tuxedo model folds on the front and stylized cuffs.



Color: White

Fabric composition: 97% cotton + 3% spandex

Product code: 02306018



CHLOE *shirt*

Cotton shirt, tuxedo model with folds on the front and stylized cuffs.



Color: White

Fabric composition: 97% cotton + 3% spandex

Product code: 02306017





EMMA *shirt*

Fitted shirt, office fit, with stylized cuffs and slightly pointed collar.



Color: White

Fabric composition: 70 bbc + 26% nylon + 4% elastane

Product code: 02306019

FREYA *shirt*

Cotton shirt, loose,
oversized fit.



Color: White

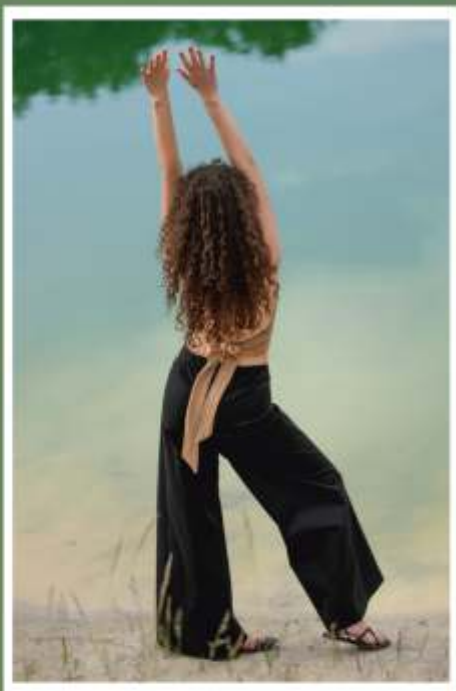
Fabric composition: 97%
cotton + 3% spandex



Product code: 02306020

GRACE *pants*

Flared pants, low waist,
front zipper closure.



Color: Black

Fabric composition: 97%
cotton + 3% spandex

Product code: 02306021



AILYN *pants*

Airy linen pants, slightly flared fit, with side pockets.



Color: Black

Fabric composition: 100% linen

Product code: 02306023





AILYN *pants*

Airy linen pants, slightly flared fit, with side pockets.



Color: White
Fabric composition: 100% linen

Product code: 02306022

AILYN *pants*

Airy linen pants, slightly flared fit, with side pockets.



Color: Camel
Fabric composition: 100% linen



Product code: 02306024

ERICA *jacket*

L inen jacket, casual fit.



Color: Olive green

Fabric composition: outer material 100% linen + lining 100% viscose

Product code: 02306027



ERICA *jacket*

L inen jacket, casual fit.



Color: Black

Fabric composition: outer material 100% linen + lining 100% viscose

Product code: 02306026



BEATRICE *pants*

Draped pants, office / casual fit, hidden zipper closure.



Color: Black

Fabric composition: 98% cotton + 2% spandex



Product code: 02306025

JANINE *dress*

A symmetric dress with frills at the base and bracelet sleeves.



Color: white-orange
Fabric composition: 100% polyester

Product code: 02306028







MAORO

MADE WITH LOVE IN CLUJ-NAPOCA, ROMANIA



SCAN TO SEE THE COLLECTION ONLINE

CONTACT:

OFFICE EMAIL: office@maoro.eu
ORDERS EMAIL: shop.maoro@gmail.com
PHONE: +40 745 564 465

www.maoro.eu



www.maoro.eu